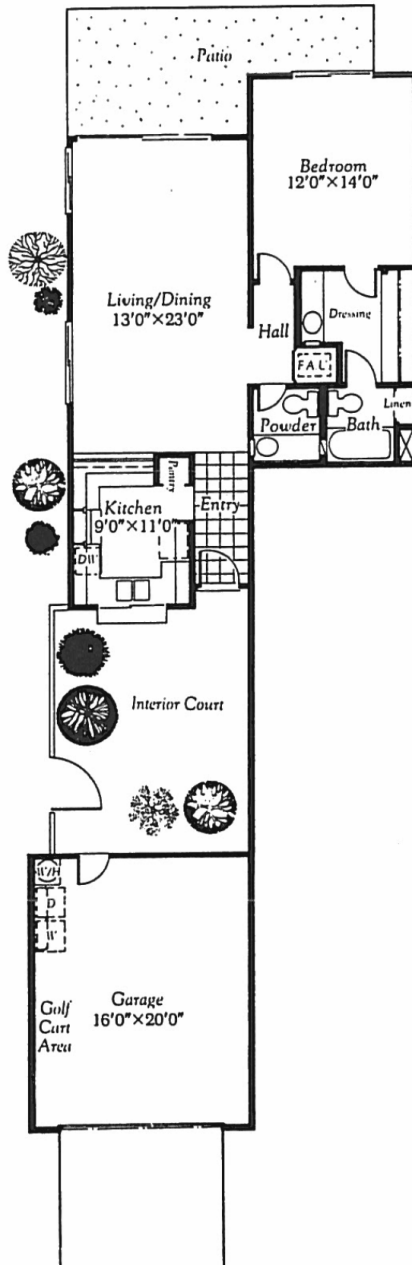


The Cabrillo Plan 1A

1 Bedroom, 1½ Bath

Here's the perfect hideaway complete with your own private courtyard with a pass-through bar to the magnificent all-electric kitchen. Perfect design for either informal outdoor entertaining, or for more formal occasions when you wish to entertain in the large living-dining area, and perhaps open the large rear sliding doors to reveal lush green fairways. The master bedroom suite is set aside for privacy while the powder room is easily accessible from the main part of this lovely residence.

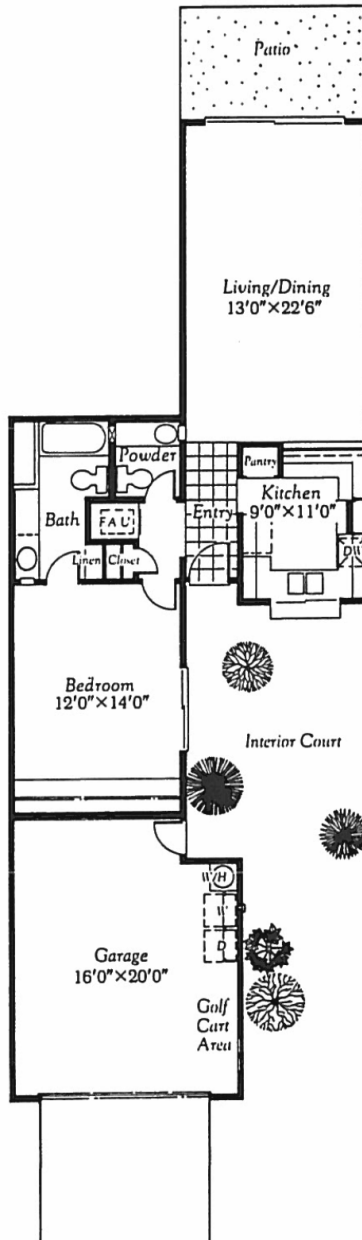


Note: Floor plan details and features subject to change without notice.

The Majorca Plan I

1 Bedroom, 1½ Bath

A beautifully designed one-bedroom plan that seems like much more. Your own private courtyard extends your home forward and the sweeping living-dining room area looks through large glass sliding doors onto a beautifully manicured green fairways. The master bedroom suite with private bath and wall-to-wall wardrobes is set to one side for privacy while the powder room is centrally located.

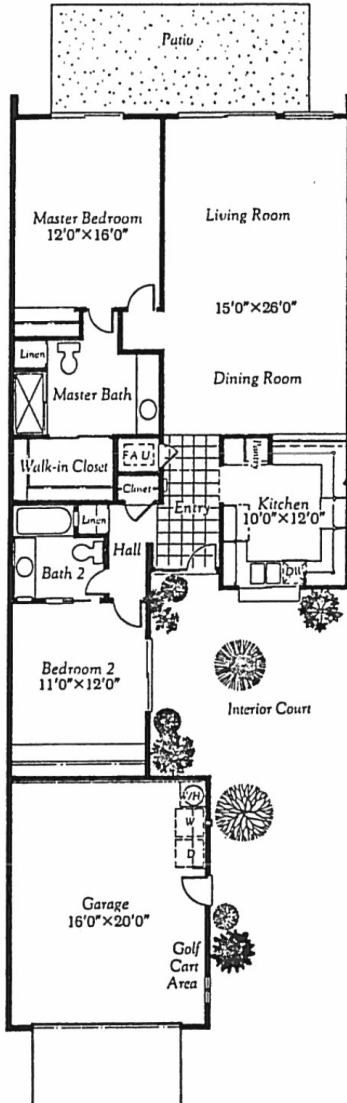


Note: Floor plan details and features subject to change without notice.

The Granada Plan 20

2 Bedroom, 2 Bath

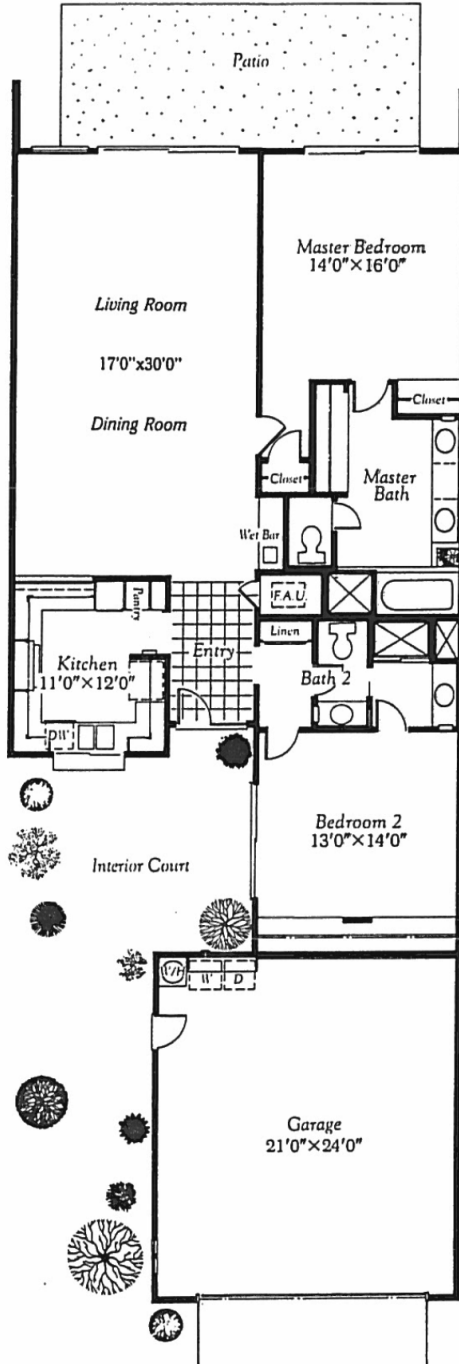
This lovely two-bedroom condominium centers around a private garden courtyard. Each bedroom is separated to allow your guests their own privacy. An all-electric kitchen with wood cabinets to highlight the latest built-in convenience. Stretch-out room for relaxation throughout this luxurious home. Sophisticated living in your own carefree condominium.



The Seville Plan 2000

2 Bedroom, 2 Bath

Enter a world of luxury through your private garden courtyard.
Spacious rooms with high ceilings and deep shag carpet.
An all-electric kitchen with beautiful wood cabinets to highlight the latest in built-in convenience.
Two spacious bedroom suites. Elegant baths. Even a sunken tub. High wardrobe closets.
Stretch-out room for relaxation throughout this luxurious home.

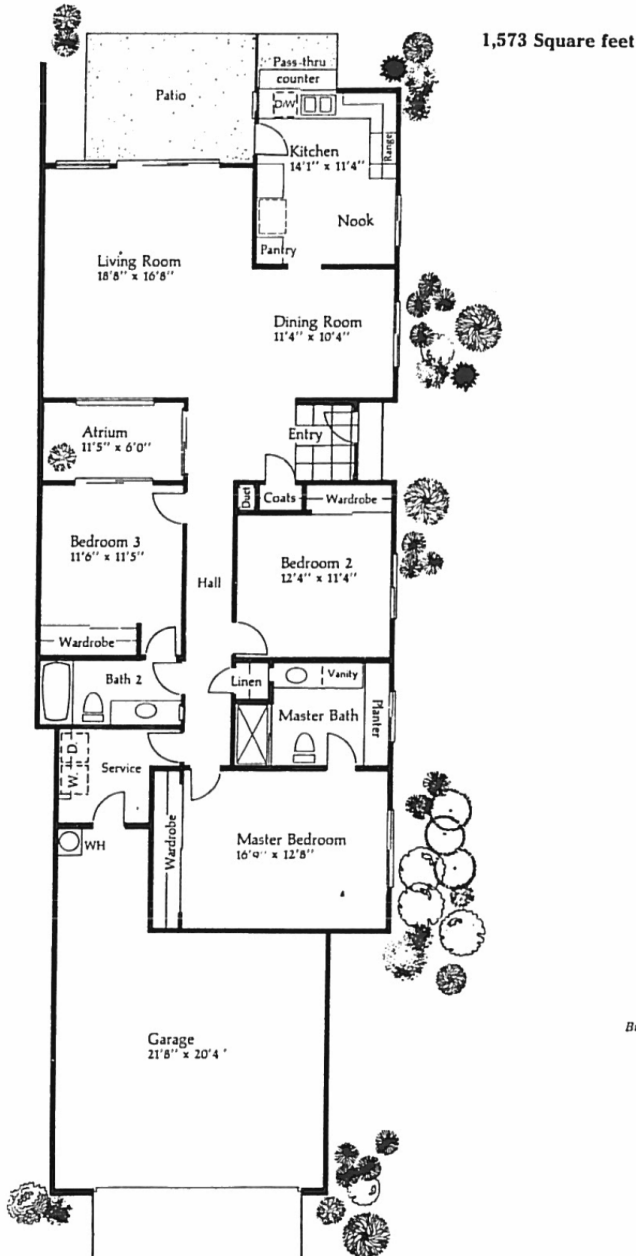


The Barcelona Plan 30B

Three bedroom, two bath

A central garden atrium creates the theme for this beautiful home. A dramatic view of lush landscaping to be enjoyed from both the living and dining rooms. The corner kitchen is an absolute delight with both a pass-thru bar and direct access to the rear patio.

Three large bedrooms for lavish comfort include a beautiful master suite and private bath with indoor planter. The large service room has direct access from the garage and is conveniently located to serve all three bedrooms. Both secondary bedrooms are located near the second bath with one bedroom connecting to become a secondary master suite.



SUNRISE COMPANY
RESALE DIVISION

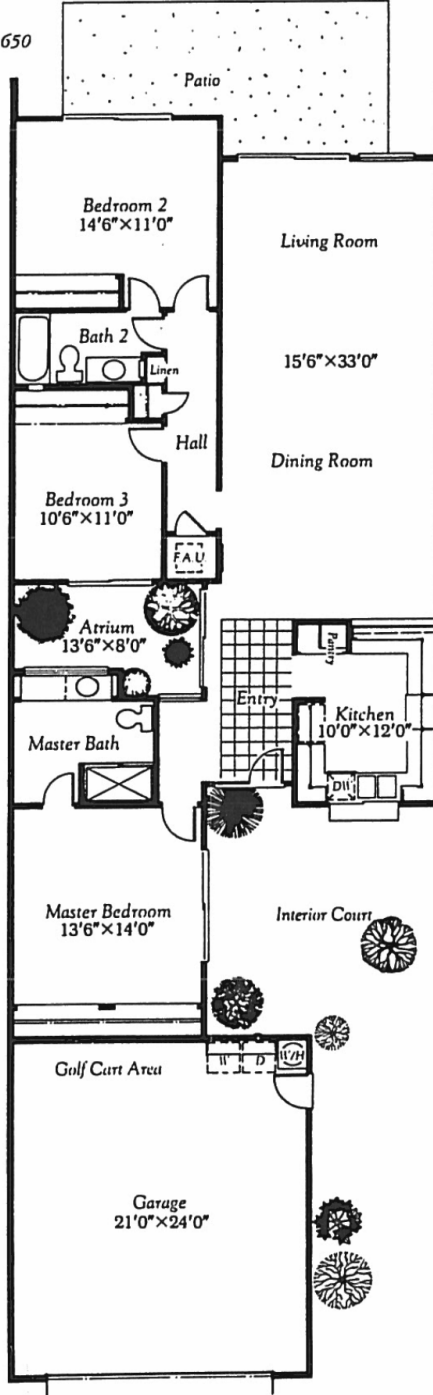
Builder of America's Finest Country Club Communities

The La Paz Plan 30A

3 Bedroom, 2 Bath

An elegant atrium lets you create your own garden environment in this magnificent residence. A dramatic view of lush landscaping. Spacious rooms that reflect quality in design and detailing. Three large bedrooms for lavish comfort including a master suite with the innovative "garden window." The kind of features that enable you to tailor this home to your lifestyle. A very personal setting for carefree luxury living.

Square Footage 1650



SUNRISE COMPANY
RESALE DIVISION

Builder of America's Finest Country Club Communities

The Madrid Plan 3000

Three bedroom, two bath

A magnificent country club home. A large atrium lets you create your own interior garden environment and provides a breathtaking setting for the entry, living room and dining room. The corner kitchen is light and airy with a pass-thru bar to the rear patio and corner windows that bring all of the surrounding beauty indoors.

This home has the sleeping wing set off for quiet and privacy. The elegant master suite with double pullmans, double wardrobes, separate tub and shower and an indoor planter is the last word in luxury. A convenient interior service room is conveniently located at the center of the sleeping wing. The secondary bedrooms are well-proportioned, with one offering direct access to the second bath to create a mini-master suite.

1,933 Square feet

